

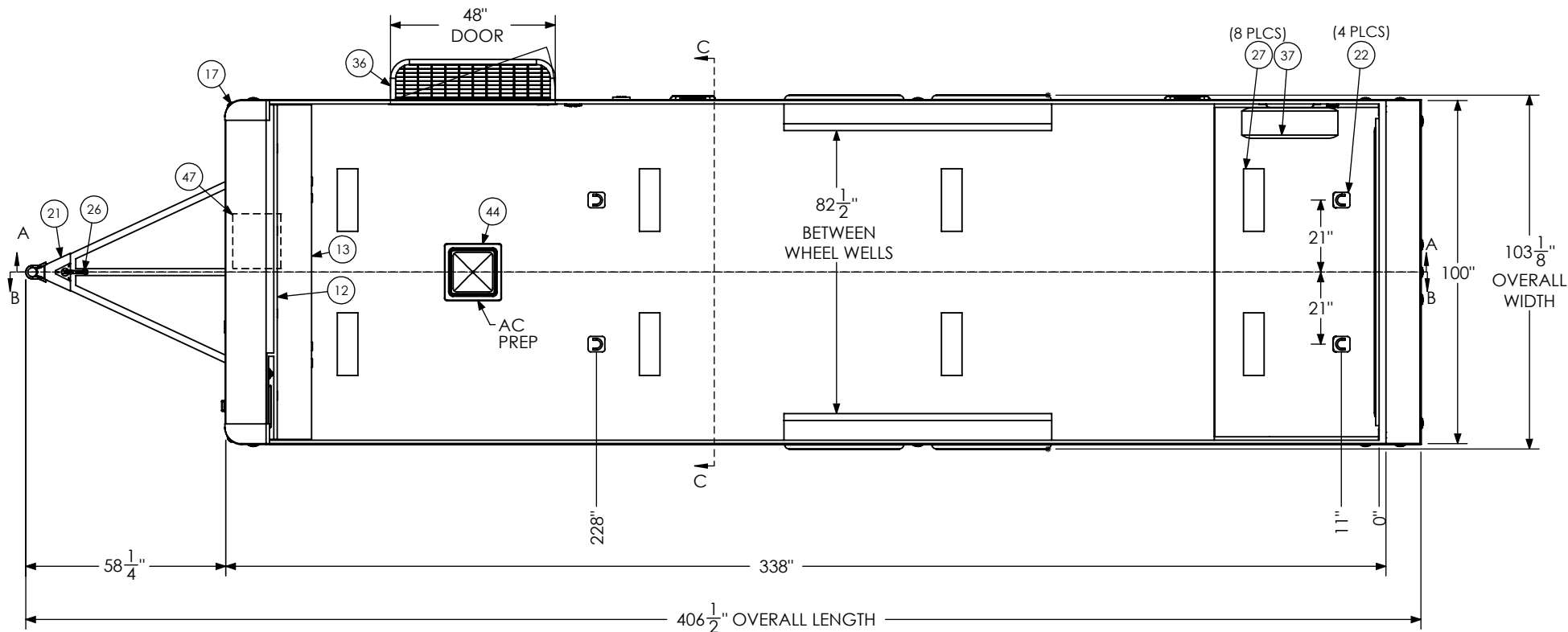
| ITEM NO. | DESCRIPTION | NOTES | QTY. |
|----------|----------------------------|--------------------------|------|
| 1 | Axle, Dexter | 5200#, 10 UP, 94HF, 78AB | 2 |
| 12 | BTL Cabinet, Overhead | | 1 |
| 13 | BTL Cabinet, Straight Base | | 1 |
| 14 | Battery Box | | 1 |
| 15 | Battery Vent | | 1 |
| 16 | Bumpers | 1" | 1 |
| 17 | Cast Corners | | 1 |
| 18 | Caster Wheel | | 2 |
| 21 | Coupler | 2 5/16" Ball, 14,000# | 1 |
| 22 | D-Ring | 5,000 | 4 |
| 23 | Door, Entrance | 48" x 78" RHS | 1 |
| 26 | Jack - Top Wind | | 1 |
| 27 | Light | 18" 12v LED | 8 |
| 28 | Load Center | 30 Amp L/C - 60 Amp Conv | 1 |
| 29 | Loading Light - LED | 13.7" 12V Loading Light | 3 |
| 30 | Motorbase Plug | 30 Amp | 1 |
| 31 | Outlet | 120V 20 Amp | 4 |
| 32 | Paddle Latch | | 2 |
| 33 | Ramp Extension | 16" Transition Flap | 1 |
| 36 | Slide Out Step | 48" Wide | 1 |
| 37 | Spare Tire Assembly | | 1 |
| 38 | Spring Assist | | 1 |
| 39 | Switch | 12v Cutoff | 1 |
| 40 | Switch | 2 - 12V Switches | 1 |
| 41 | Switch | 1 - 12V Switch | 1 |
| 43 | Tire | ST225/75R15 | 4 |
| 44 | Vent, Roof | | 1 |
| 47 | Winch Plate | | 1 |

T:\SolidWorks CAD\BTL\BTL8.5x28TA3\

PROPRIETARY AND CONFIDENTIAL

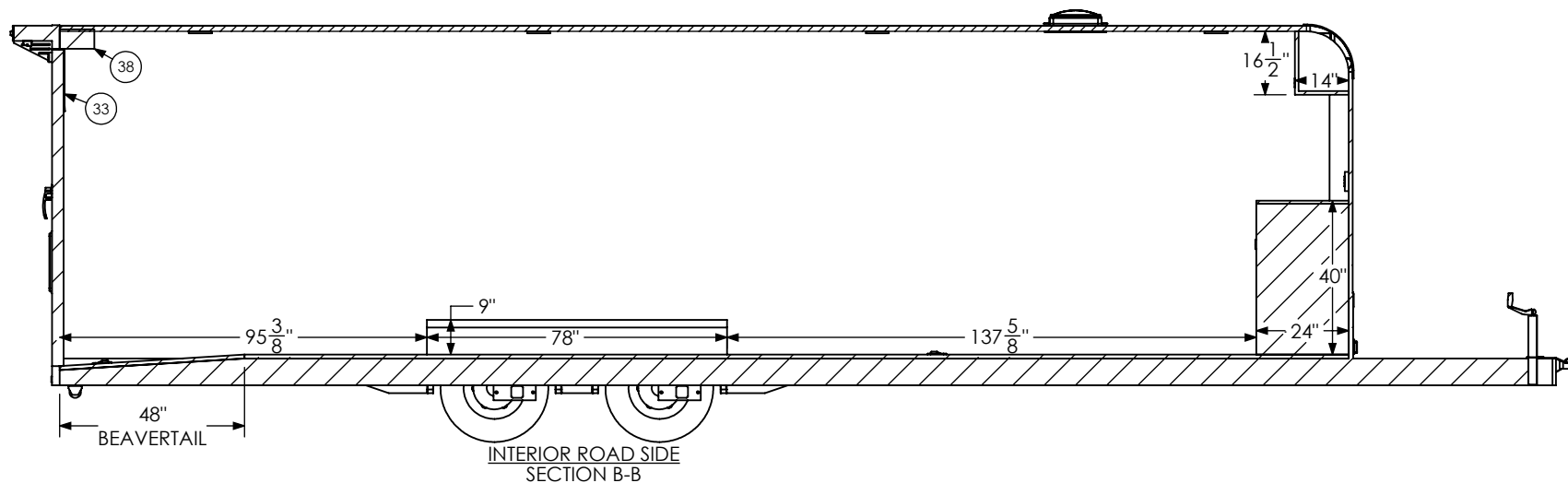
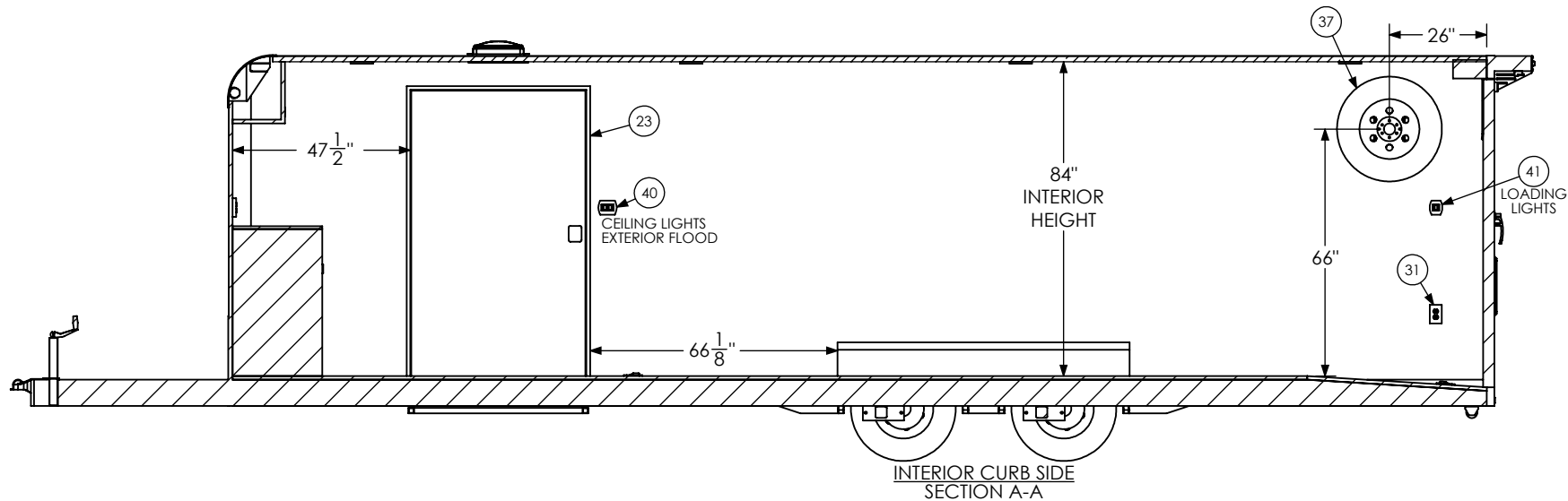
THE INFORMATION CONTAINED IN THIS DRAWING IS THE SOLE PROPERTY OF INTECH TRAILERS. ANY REPRODUCTION IN PART OR AS A WHOLE WITHOUT THE WRITTEN PERMISSION OF INTECH TRAILERS IS PROHIBITED.

| | | | | |
|---|------|--|--|--------|
| SCALE: 1:54 | NAME | DATE | inTech Trailers | |
| DRAWN | NjM | 2/7/24 | inTech BTL8.5x28TA3 - STANDARD BOM | |
| ALL DIMENSIONS ARE IN INCHES AND ARE NOMINAL. DIMENSIONS ON ACTUAL TRAILER MAY VARY FROM WHAT IS SHOWN ON PRINT BASED ON ACTUAL FRAMING AND TRAILER STRUCTURE. UNLESS NOTED AS CRITICAL | | DWG. NO. | SHEET 1 OF 5 | REV. J |
| | | BTL8.5x28TA3 Trailer Assembly - Standard | | |



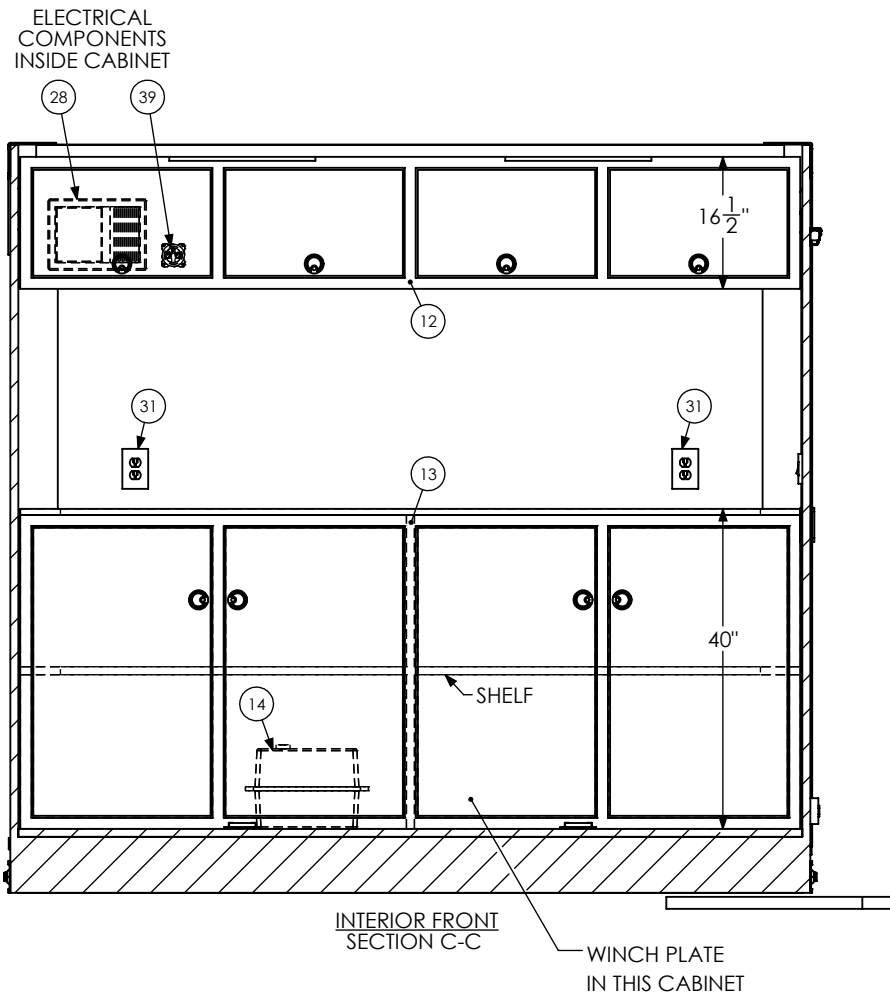
PROPRIETARY AND CONFIDENTIAL
 THE INFORMATION CONTAINED IN THIS DRAWING IS THE
 SOLE PROPERTY OF INTECH TRAILERS. ANY REPRODUCTION
 IN PART OR AS A WHOLE WITHOUT THE WRITTEN PERMISSION
 OF INTECH TRAILERS IS PROHIBITED.

| | | | | |
|---|------|--------|--|---------------------------|
| SCALE: 1:45 | NAME | DATE | <i>inTech Trailers</i> | |
| DRAWN | NjM | 2/7/24 | inTech BTL8.5x28TA3 - STANDARD FLOORPLAN | |
| ALL DIMENSIONS ARE IN INCHES AND ARE NOMINAL. DIMENSIONS ON ACTUAL TRAILER MAY VARY FROM WHAT IS SHOWN ON PRINT BASED ON ACTUAL FRAMING AND TRAILER STRUCTURE. UNLESS NOTED AS CRITICAL | | | DWG. NO. BTL8.5x28TA3 Trailer Assembly - Standard | SHEET 2 OF 5 REV. J |



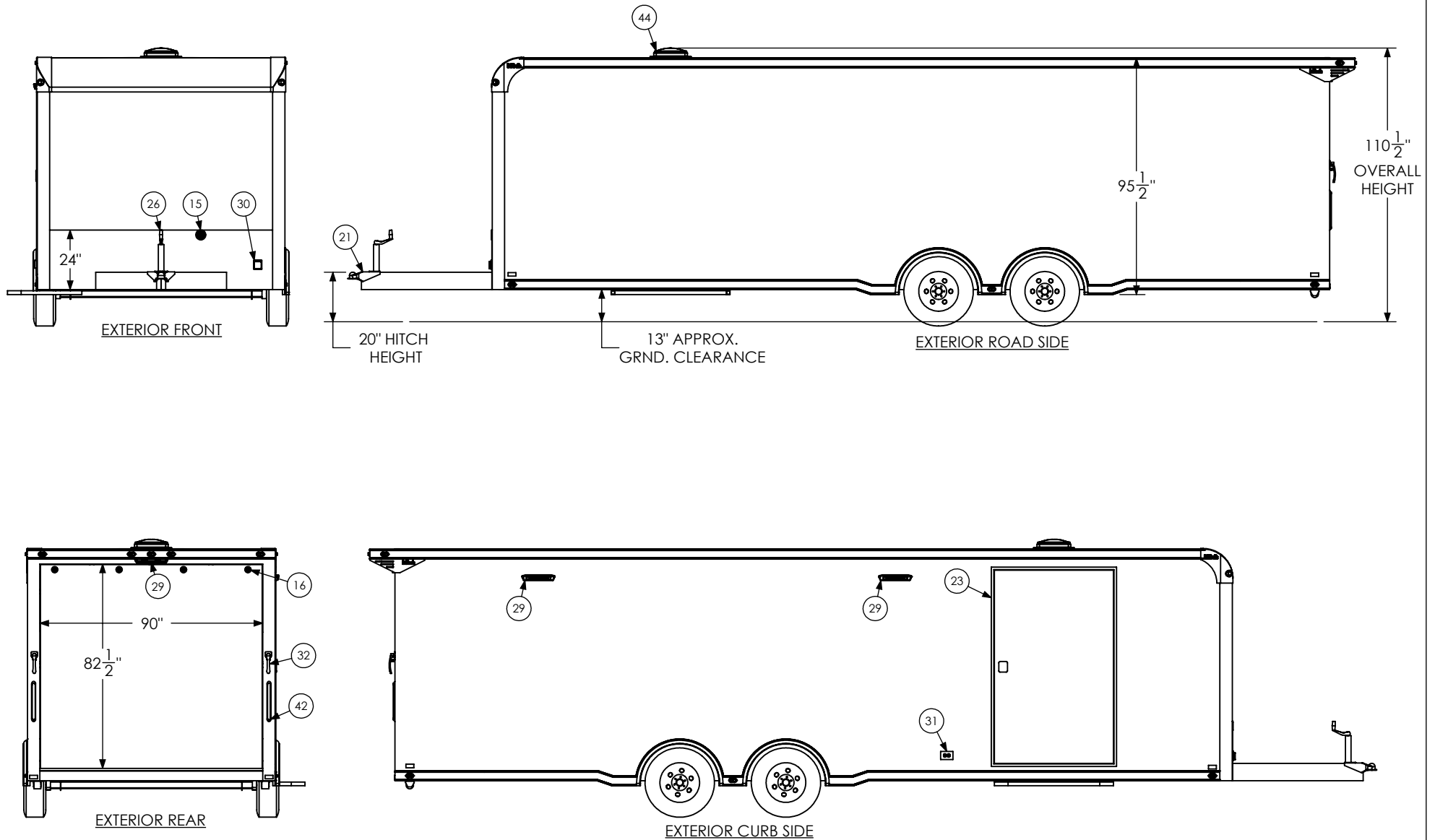
| | | | | |
|---|------|--------|--|---------------------------|
| SCALE: 1:46 | NAME | DATE | <i>inTech Trailers</i> | |
| DRAWN | NjM | 2/7/24 | inTech BTL8.5x28TA3 - STANDARD INTERIOR SIDES | |
| ALL DIMENSIONS ARE IN INCHES AND ARE NOMINAL. DIMENSIONS ON ACTUAL TRAILER MAY VARY FROM WHAT IS SHOWN ON PRINT BASED ON ACTUAL FRAMING AND TRAILER STRUCTURE, UNLESS NOTED AS CRITICAL | | | DWG. NO. BTL8.5x28TA3 Trailer Assembly - Standard | SHEET 3 OF 5 REV. J |

PROPRIETARY AND CONFIDENTIAL
THE INFORMATION CONTAINED IN THIS DRAWING IS THE
SOLE PROPERTY OF INTECH TRAILERS. ANY REPRODUCTION
IN PART OR AS A WHOLE WITHOUT THE WRITTEN PERMISSION
OF INTECH TRAILERS IS PROHIBITED.



| | | | | |
|---|------|--------|--|---------------------------|
| SCALE: 1:24 | NAME | DATE | <i>inTech Trailers</i> | |
| DRAWN | NjM | 2/7/24 | inTech BTL8.5x28TA3 - STANDARD INTERIOR FRONT | |
| ALL DIMENSIONS ARE IN INCHES AND ARE NOMINAL. DIMENSIONS ON ACTUAL TRAILER MAY VARY FROM WHAT IS SHOWN ON PRINT BASED ON ACTUAL FRAMING AND TRAILER STRUCTURE. UNLESS NOTED AS CRITICAL | | | DWG. NO. BTL8.5x28TA3 Trailer Assembly - Standard | SHEET 4 OF 5 REV. J |

PROPRIETARY AND CONFIDENTIAL
THE INFORMATION CONTAINED IN THIS DRAWING IS THE SOLE PROPERTY OF INTECH TRAILERS. ANY REPRODUCTION IN PART OR AS A WHOLE WITHOUT THE WRITTEN PERMISSION OF INTECH TRAILERS IS PROHIBITED.



PROPRIETARY AND CONFIDENTIAL
 THE INFORMATION CONTAINED IN THIS DRAWING IS THE
 SOLE PROPERTY OF INTECH TRAILERS. ANY REPRODUCTION
 IN PART OR AS A WHOLE WITHOUT THE WRITTEN PERMISSION
 OF INTECH TRAILERS IS PROHIBITED.

| | | | | |
|---|------|--------|--|---------------------------|
| SCALE: 1:56 | NAME | DATE | <i>inTech Trailers</i> | |
| DRAWN | NjM | 2/7/24 | inTech BTL8.5x28TA3 - STANDARD EXTERIOR | |
| ALL DIMENSIONS ARE IN INCHES AND ARE NOMINAL. DIMENSIONS ON ACTUAL TRAILER MAY VARY FROM WHAT IS SHOWN ON PRINT BASED ON ACTUAL FRAMING AND TRAILER STRUCTURE. UNLESS NOTED AS CRITICAL | | | DWG. NO. BTL8.5x28TA3 Trailer Assembly - Standard | SHEET 5 OF 5 REV. J |